

Keeping Wasi Ski Club Safe

Due to the continued COVID-19 pandemic, the Wasi Cross Country Ski Club is implementing enhanced protocols for the 2020/21 ski season. Please take a moment to familiarize yourself with these changes. We can all do our part to keep our community safe.

The Chalet Will Be Closed Temporarily



The season will begin with a **closed chalet**.

The **outdoor fire pit** will be expanded and can be used by skiers and snowshoers to warm up.

Current restrictions on outdoor gatherings must be followed around the fire pit, including **physical distancing**.

Etiquette on the Trails

When possible, please arrive in your skiing attire to **limit congregating outside of the chalet**.

Face coverings are **not** required on trails.

Maintain a minimum of **2 metres between skiers and snowshoers** unless in the same household.



Amenities Available

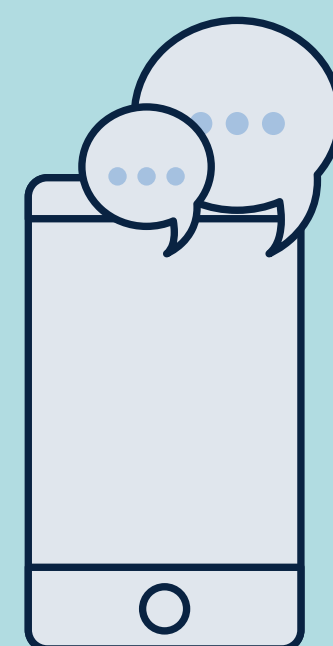
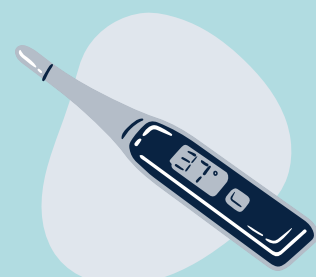
Outhouses will be available for skiers to use. They will be disinfected regularly by volunteers.

Day use access will continue. Fees will be collected in a box attached to the chalet door.

The **sign-in sheet** will be moved outdoors to a weather-proof box. Use the hand sanitizer provided. The sheet will also be used for contact tracing if a member tests positive for COVID-19.

Stay home if...

- You are **feeling sick**
- You or a close contact are **awaiting the results of a COVID-19 test** due to symptoms and/or close contact with someone who tested positive in the **last 14 days**



Questions or Concerns?

Email president@wasiski.com or phone 705-499-0057.

